



**1/8 Rous Street Wyndham Vale VIC**

3  2  1 

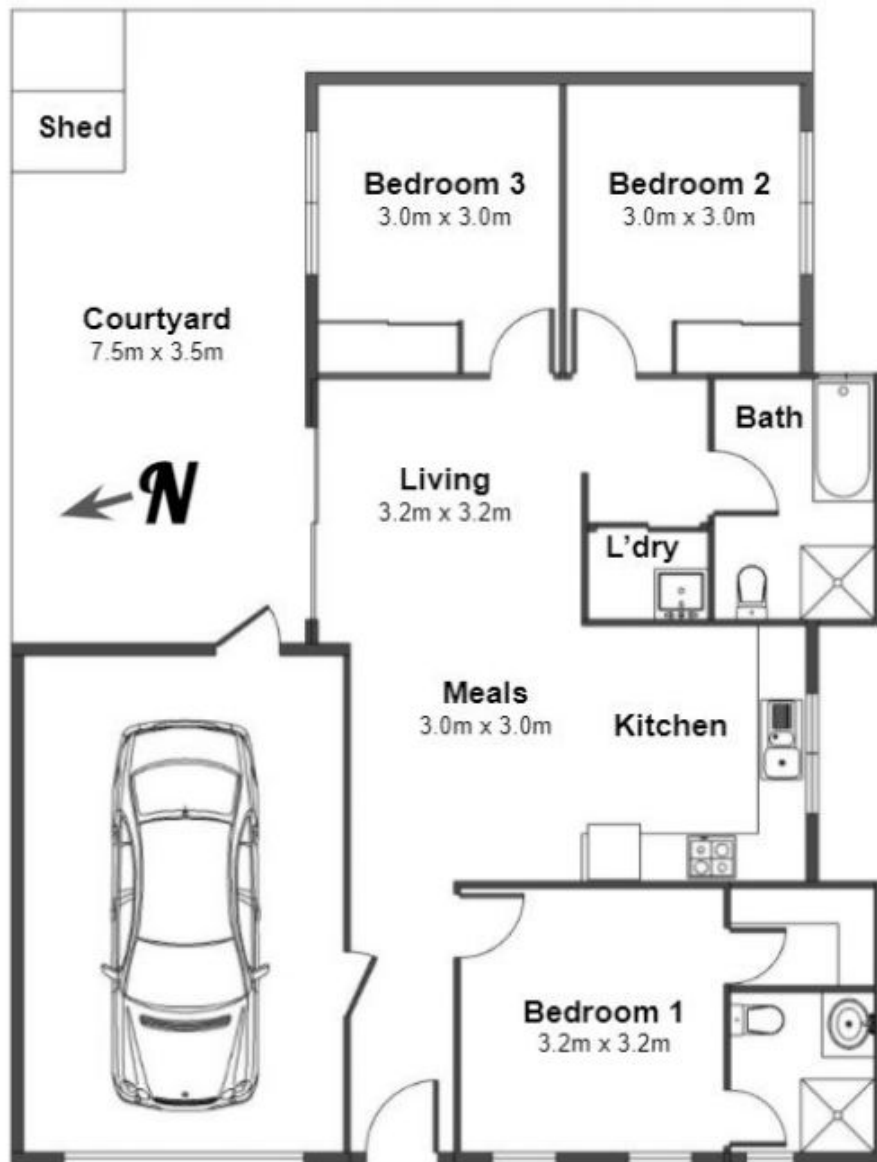
It's TIME to secure a home that has been updated throughout, centrally located close to the walking tracks of President Park, Manor Lakes Shopping Centre, Riverbend Primary School and a short drive to Werribee Train Station and Manor Lakes Shopping Centre.

**Type** : Unit  
**Price** : \$450,000  
**View** : <https://www.di-carlo.com.au/sale/vic/west/wyndham-vale/residential/unit/6964639>

Featuring three bedrooms all with built in robes, the main bedroom is complemented by an ensuite, whilst the remaining bedrooms are serviced by a central bathroom.

A light filled kitchen is modern throughout with timber finish cabinets, tiled splashback and stainless steel appliances and overlooks the meals and living area, boasts a European styled laundry.

[For full version visit the website](https://www.di-carlo.com.au)



## 1/8 Rous Street, Wyndham Vale, Vic 3024

This plan is a sketch and all data is general only